



YOUR INDEPENDENT HPE SOFTWARE COMMUNITY



# Introducing the Next Generation of ALM

March 22, 2016

Brought to you by



**Hewlett Packard  
Enterprise**



# Hosted By:



Bob Crews  
Florida Chapter Leader



# Today's Speakers



Matthew Brayley-Berger  
Sr. Product Marketing Manager  
Application Lifecycle and Quality  
Hewlett Packard Enterprise



Vandan Nayak  
Sr. Product Manager  
Hewlett Packard Enterprise



# Housekeeping

- This “LIVE” session is being recorded  
Recordings are available to all Vivit members
- Session Q&A:  
Please type questions in the Questions Pane



# Webinar Control Panel

Toggle View Window between Full screen/window mode.

Questions





**Hewlett Packard  
Enterprise**

# HPE ALM Beta

**VIVIT**

**Matt Brayley-Berger  
Vandan Nayak**

**March 22, 2016**



---

## **Forward-looking statements**

**This is a rolling (up to three year) roadmap and is subject to change without notice.**

This document contains forward looking statements regarding future operations, product development, product capabilities and availability dates. This information is subject to substantial uncertainties and is subject to change at any time without prior notification. Statements contained in this document concerning these matters only reflect Hewlett Packard Enterprise's predictions and / or expectations as of the date of this document and actual results and future plans of Hewlett Packard Enterprise may differ significantly as a result of, among other things, changes in product strategy resulting from technological, internal corporate, market and other changes. This is not a commitment to deliver any material, code or functionality and should not be relied upon in making purchasing decisions.





---

## **Hewlett Packard Enterprise confidential information**

This is a rolling (up to three year) roadmap and is subject to change without notice.

This Roadmap contains Hewlett Packard Enterprise Confidential Information.

If you have a valid Confidential Disclosure Agreement with Hewlett Packard Enterprise, disclosure of the Roadmap is subject to that CDA. If not, it is subject to the following terms: for a period of 3 years after the date of disclosure, you may use the Roadmap solely for the purpose of evaluating purchase decisions from Hewlett Packard Enterprise and use a reasonable standard of care to prevent disclosures. You will not disclose the contents of the Roadmap to any third party unless it becomes publically known, rightfully received by you from a third party without duty of confidentiality, or disclosed with Hewlett Packard Enterprise's prior written approval.



**The evolution of application delivery is here**

# In the new world of application delivery



New digital technologies



New business models



New delivery challenges

# We need a new approach to delivering software



New digital technologies



New business models



New delivery challenges

Iterative  
ALM, LR, PC, predictive defect  
convergence

Agile/Scrum  
Agile Manager, SRL

DevOps/MQM  
ALM NG, SRL

Predictive insights

# It's evolution, not revolution— Bi-Modal IT is key and here to stay

ALM.NET  
Proven  
Scalable  
Workflow driven



ALM-Beta  
Agile, Continuous  
Delivery/Quality

## Core IT

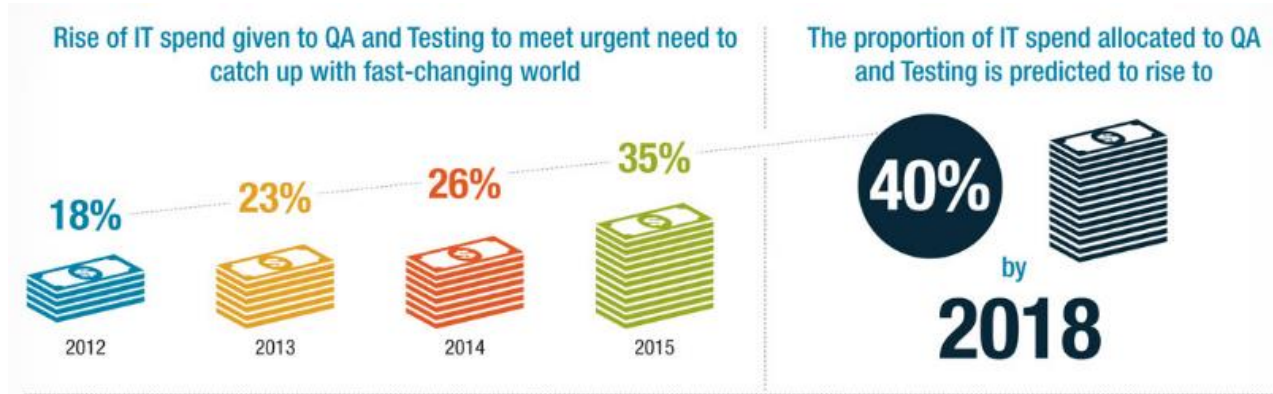
- Your “business backbone” Reliable, compliant, secure
- Plan, governed and approvals driven
- Built to last
- Waterfall and Hybrid delivery



## Fluid IT

- Agile and fluid
- Innovation, brand, profit measures
- Think continuous, days, weeks
- Built to change
- Agile, Continuous delivery

# Quality is critical today and in the future



## Executive Management Objectives with QA/Testing

1. Protect the corporate image
2. Increase quality awareness across all disciplines
3. Ensure End-User satisfaction
4. Increase overall software quality
5. Detect software defects before go-live
6. Implement quality checks early in the lifecycle

## Top 5 technical challenges in Application Development

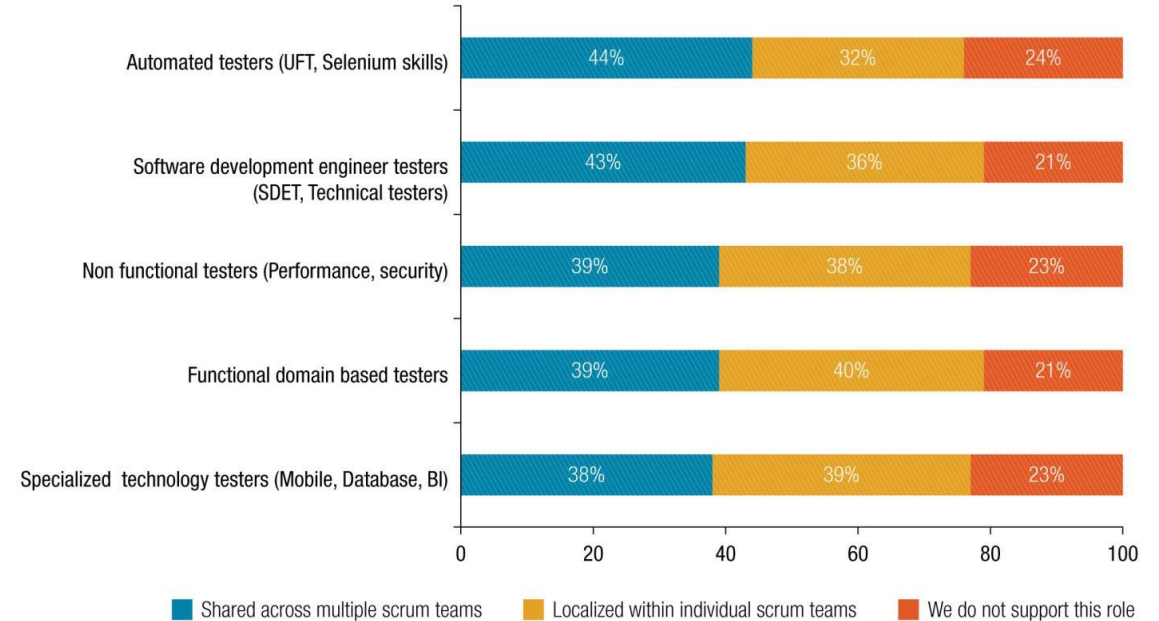
1. Reliance on manual testing
2. Overburdened Developers
3. Long lag-time between dev phases
4. Too much design complexity
5. Lack of access to test environments

# Testers have an important role in agile

Driving a focus on quality throughout the lifecycle

- Collaboration between the Business and Development
  - User Acceptance Testing
  - Behavior Driven Development
- Architect and build test automation
- Integrate Continuous Test, into CI framework
- Refine and Validate Definition of Done
- Performance, Security

## Tester Functions within Agile Teams



Source: 2015/16 World Quality Report – Sogeti/HP

---

## Our core beliefs

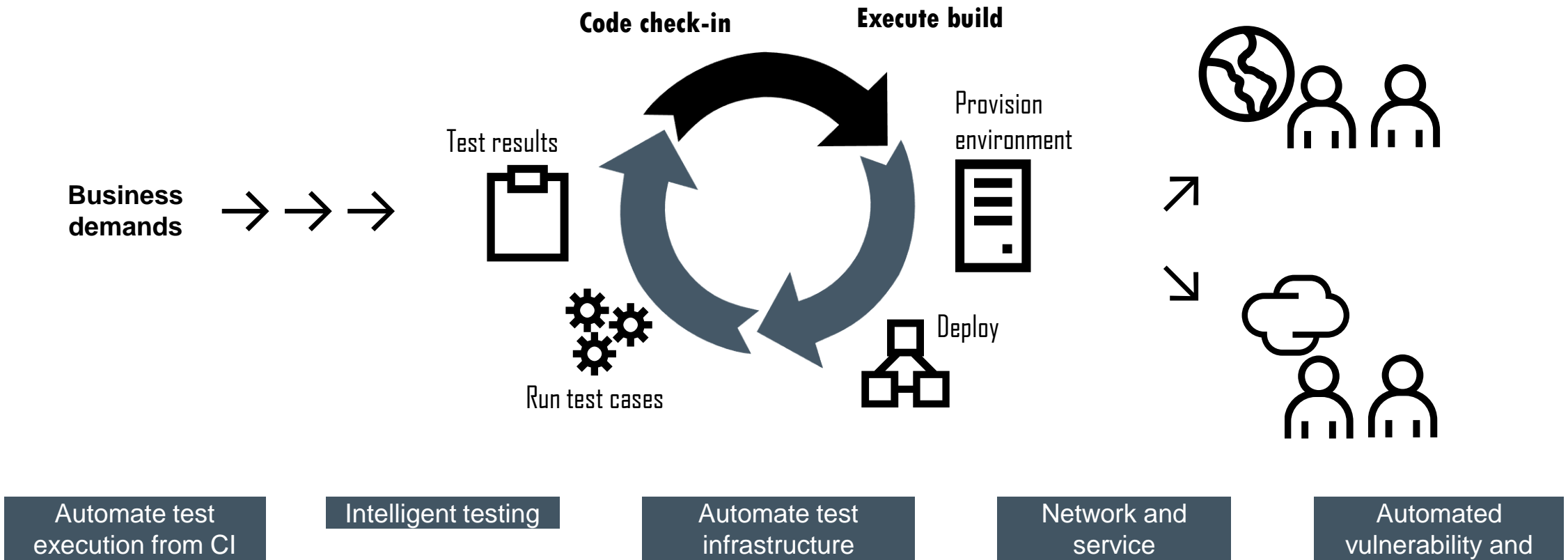
- All tests should be stored as code, and versioned with the code
- Continuous integration, with quality being core throughout the entire lifecycle
  - Continuous Testing
- Lifecycle data empowers the team to make the best decisions
- No one size fits all methodology to support the enterprise (Agile, Iterative, Waterfall etc..)
- Open architecture; integrations, API
- A single platform for all core, project assets
- *Core project assets should be accessible on-demand, from any platform*





# Continuous testing

Ensuring a quality-focus throughout the release pipeline



# Shared platform for better collaboration

## HPE ALM

ViewContacts.Feature

**Feature:** ViewContacts

Check for the main contacts page  
Also verify if the registered user is displayed

**Background:**

**Given** the user is successfully authenticated

**Scenario:** Allow the user to view a list of all contacts they have within their messaging environment

**Given** I have opened the application and navigated to the main contacts page

**And** I see the contacts page loaded

**Step 1:** Log into the main page of the system

Expected Result: The system welcomes the user and displays a list of available options

**Step 2:** The user selects to purchase a ticket

Expected Result: The system displays a form to allow the user to select origin, destination and travel date

**Step 3:** The user enters <origin city>, <destination city>, <departure date>, <return date>

Expected Result: The system displays a valid list of available air carriers, schedules and fares corresponding to the users submitted information

PurchaseFlights.Test



Feature.Java

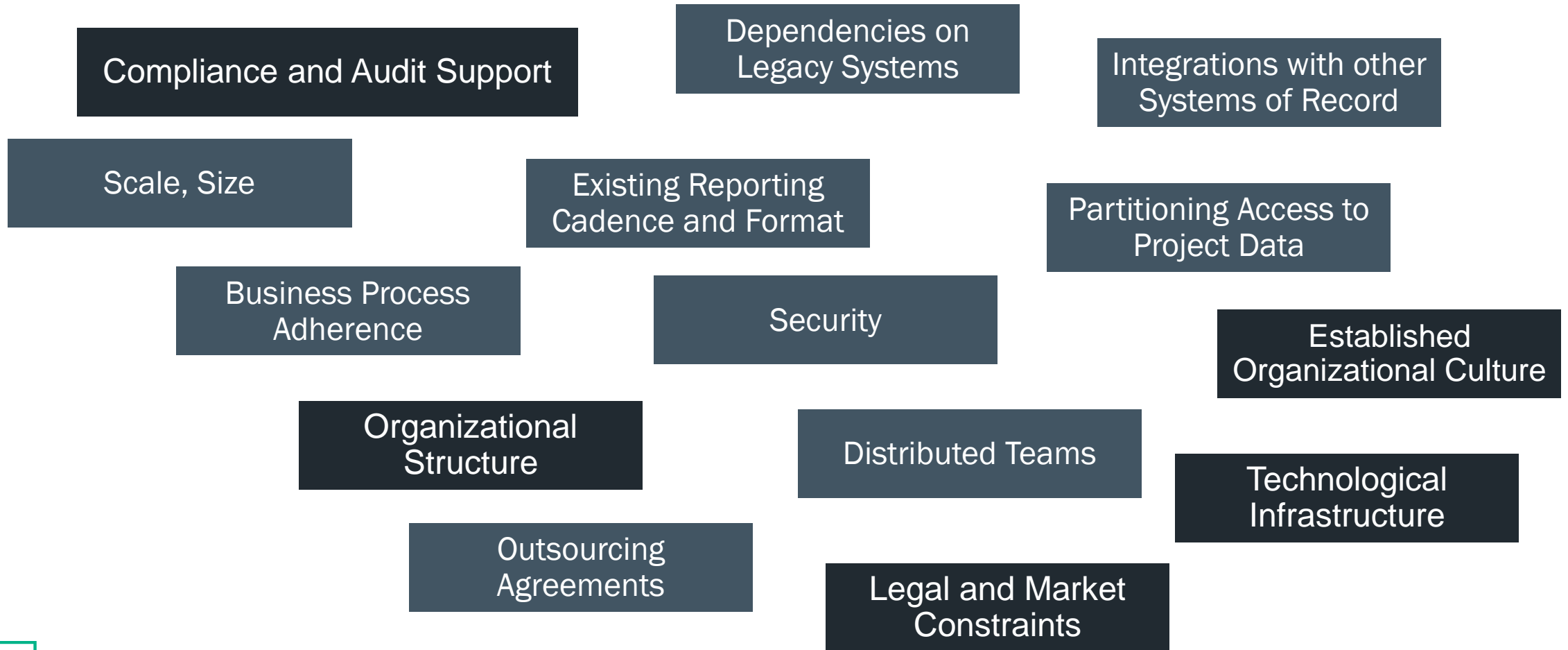
ViewContacts.Feature

JUnit



# Agile within the enterprise

## Additional considerations



---

# Supporting Enterprise Agile in ALM

Scaling Agile to the enterprise; scaling the enterprise towards DevOps

**Scaled Agile Framework (SAFe) support**

**Best practices architected into the platform**

**Open and extensible**

- REST + Swagger documentation
- ALM Synchronizer
- Out-of-the-Box integrations

**Policy and process guidance**

- Visual Workflow, Business Rules

**Easily share or partition project data with workspaces**

**Enterprise security and access controls**

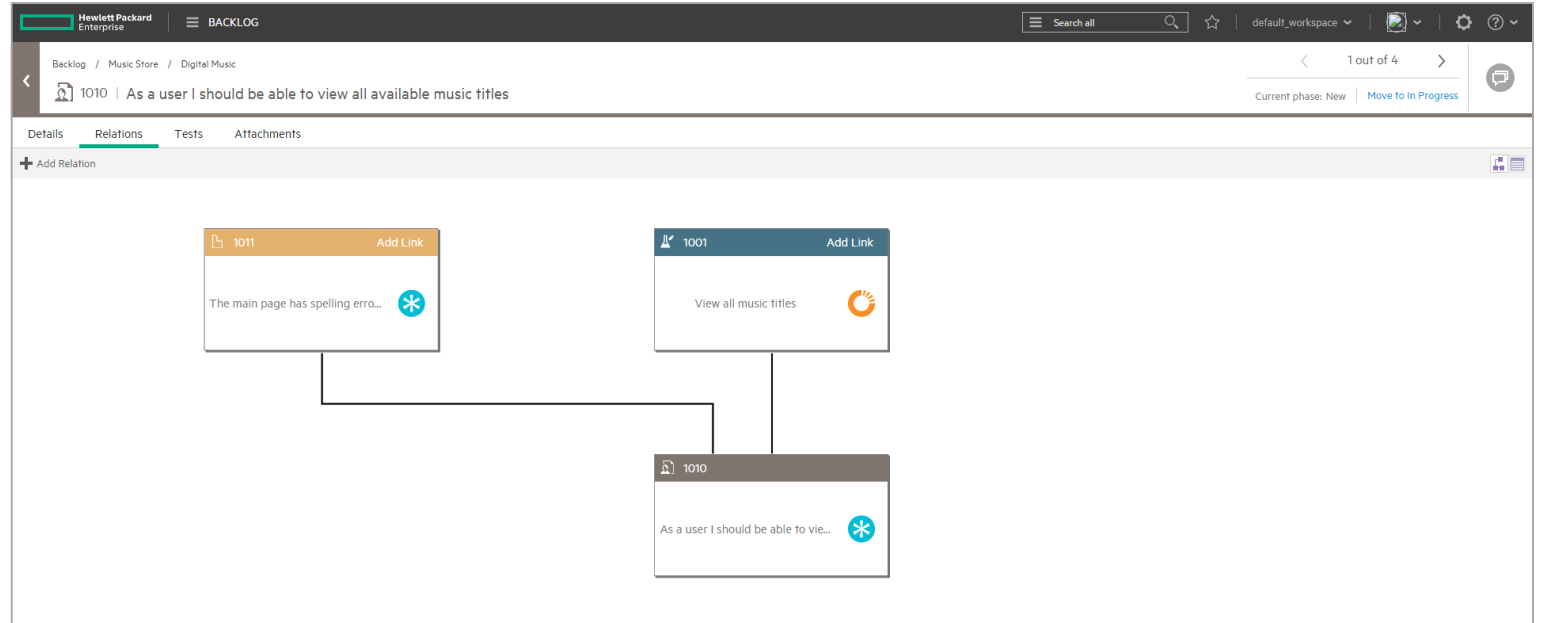
**Scale up to 1000's of users**

**Access on any browser, any platform**

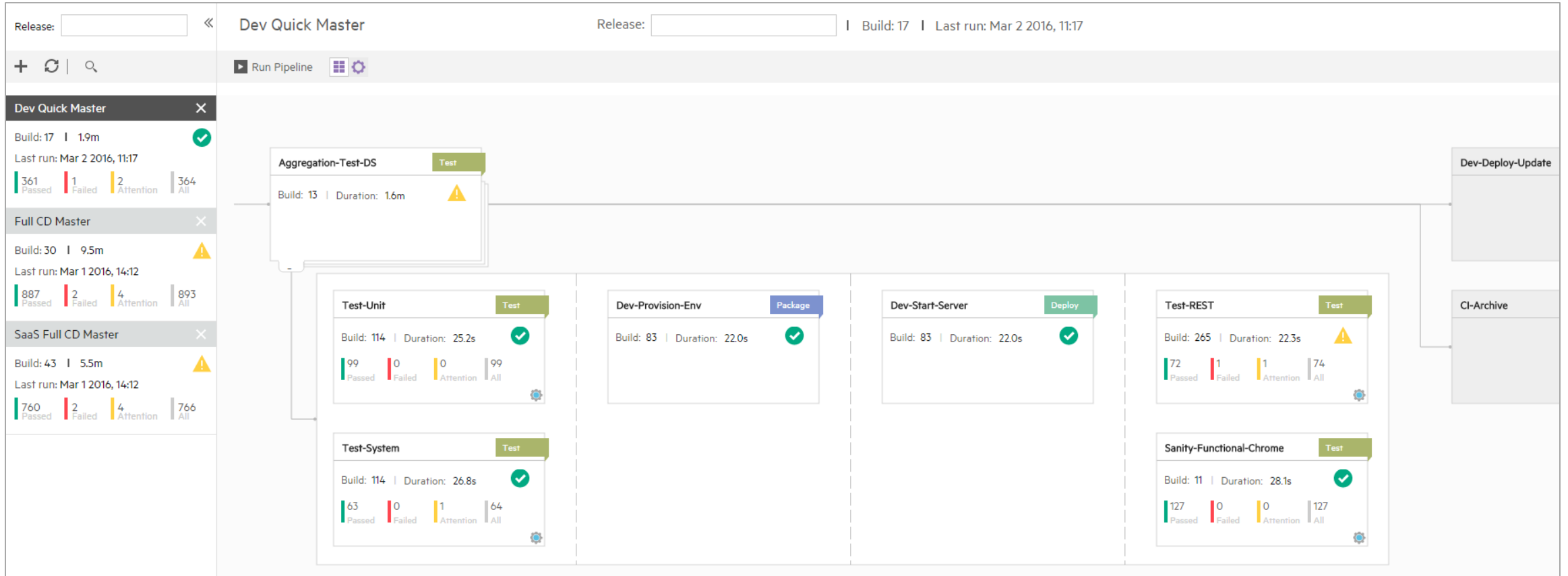
# It's about more than defect tracking

## Relationships

- Automated relationship management
- Better context to gauge change-impact
- Foster sharing/re-use



# Aggregated view of quality across the lifecycle



CI test analytics

Tracking build quality pipeline

Drill down Test Runs

# Continuing to embrace open source

## Gherkin framework support

- Structured manual test format, allows for an easier transition to test automation

## Jenkins

- Core to the execution architecture, and CI support

## GIT

- Direct part of the underlying ALM architecture

## 3<sup>rd</sup> party test execution, in addition to HPE products

- E.g. Selenium

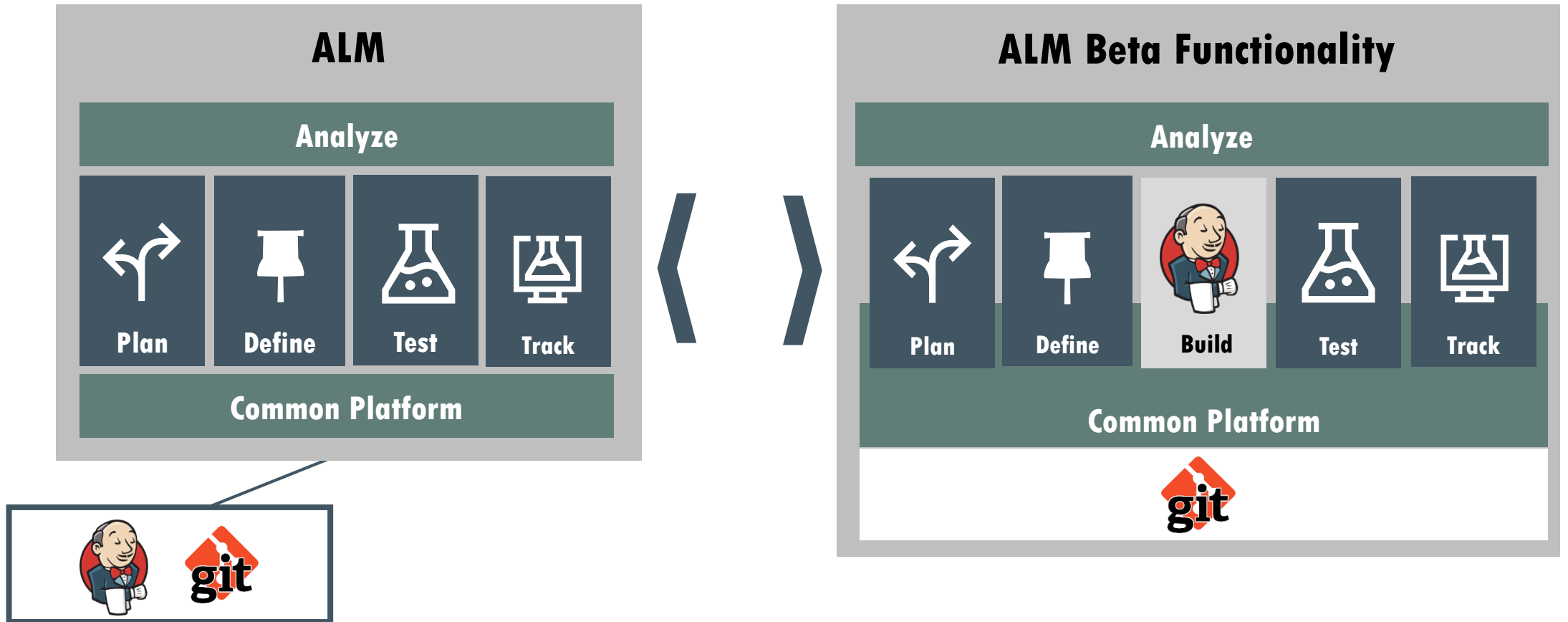




# HPE ALM Beta



# HPE ALM beta



Plan



Define



Build



Test

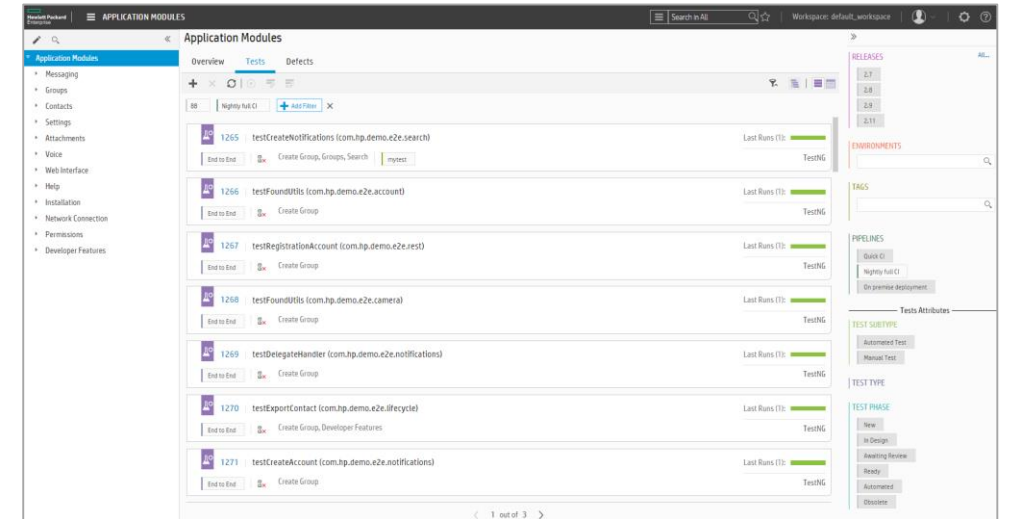
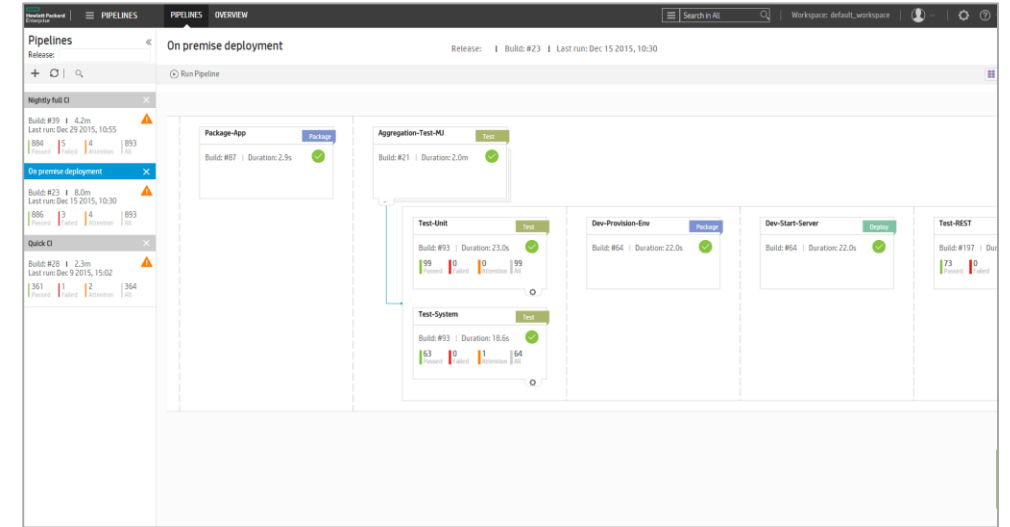
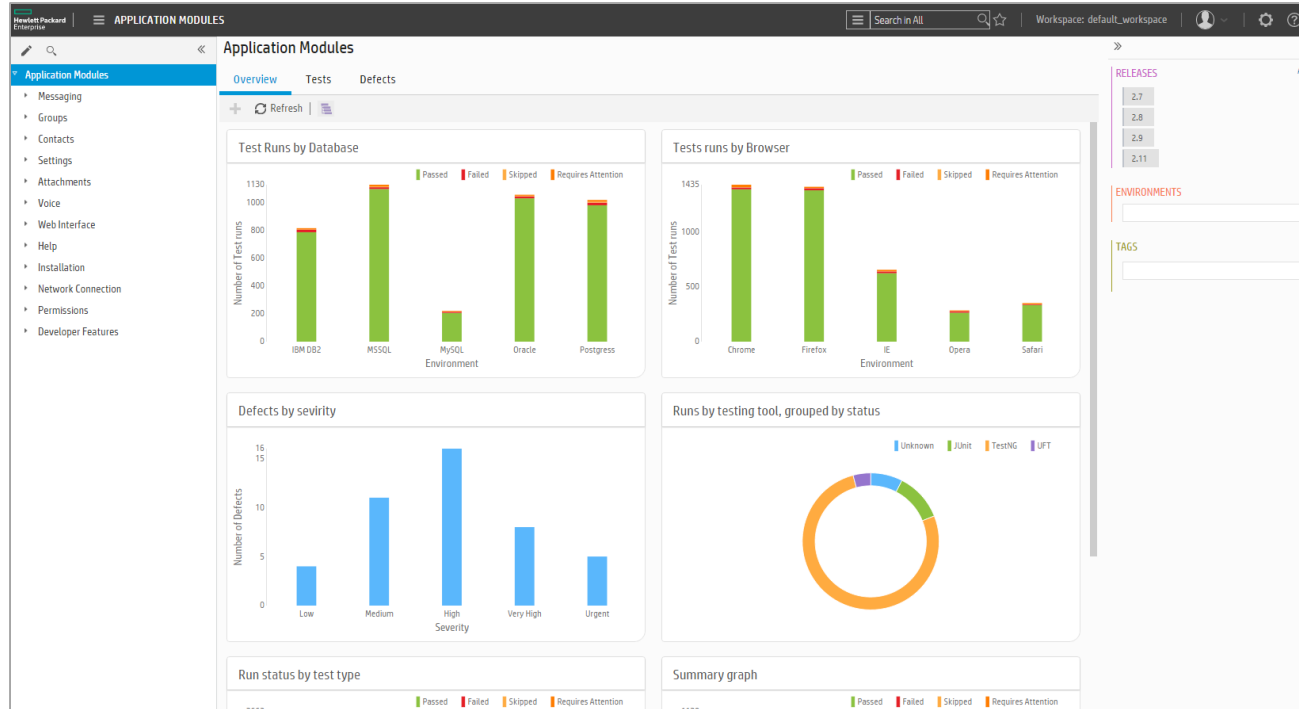


Track



# Plan

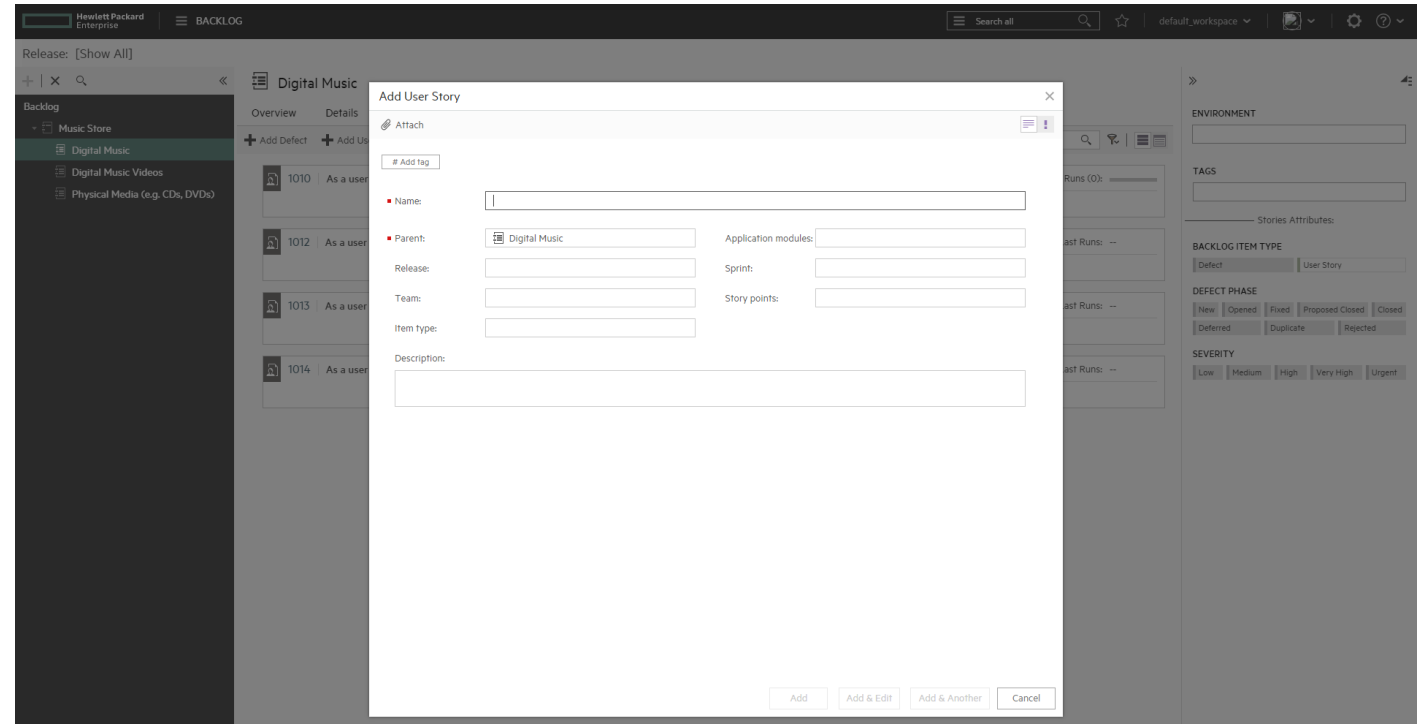
## Quickly assess progress



# Define

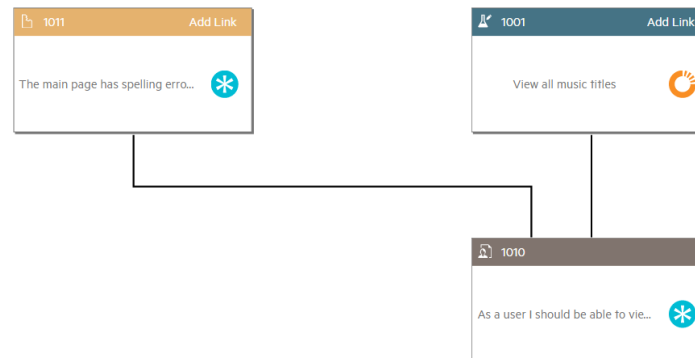
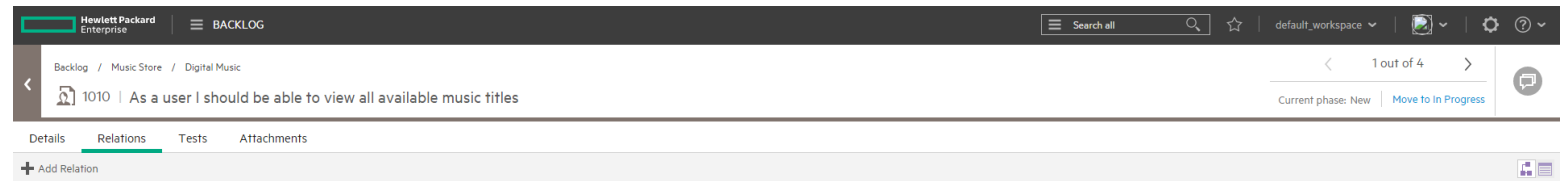
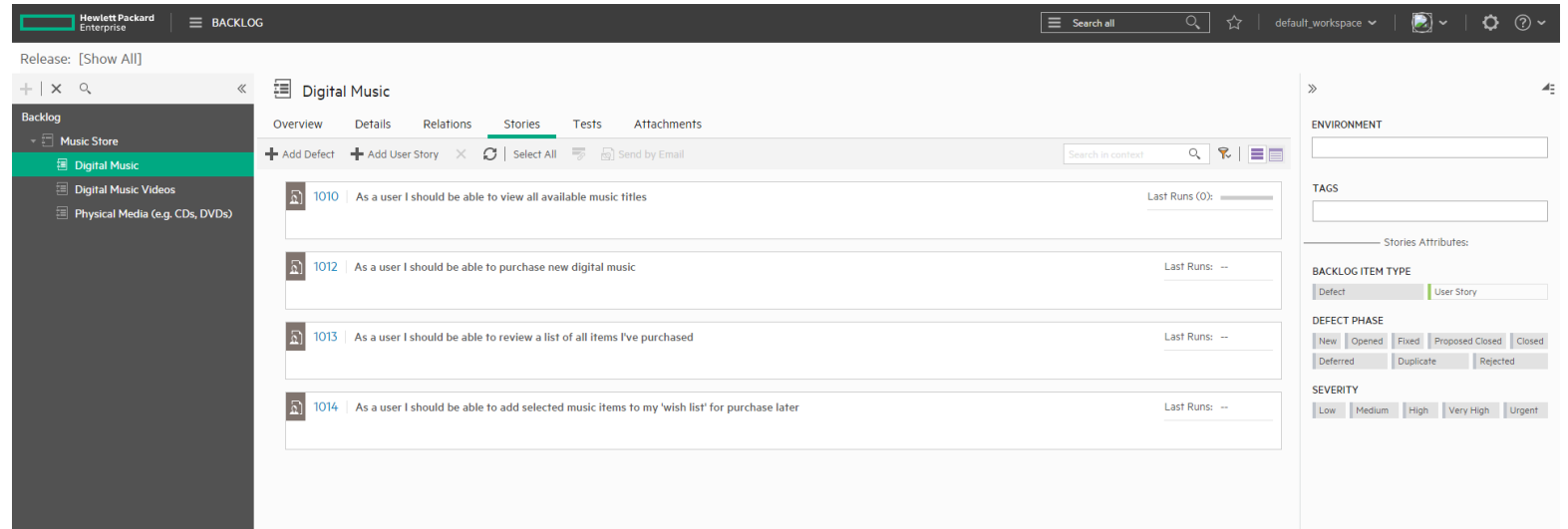
## Backlog items – user stories

- Collaborative workspace to build and prioritize the backlog
- Standardization and centralization
- Customizable forms, fields and workflow
- Easily share and re-use backlog items
- Make more informed decisions about status and progress



# Define Relationships

- Traceability across the lifecycle, across multiple asset types (e.g. test, defects, stories)
- Digitized workflow and policy enforcement
- Complete version control, change management



# Build

Insight with collection of build data

## Nightly Full CI

Build: #14

Last Run:  
2 hs

Run By:  
SYSTEM

Duration:  
4m 7 s

Tests: (893)

History:

883

6

4

Passed

Failed

Warn



## Jenkins

Build: #13

| Build | Job                | Status  | Duration    |
|-------|--------------------|---------|-------------|
| 1     | SR-COMMIT-CI-BUILD | Success | 1:20:20 ago |
| 2     | SR-COMMIT-CI-BUILD | Success | 1:20:20 ago |
| 3     | SR-COMMIT-CI-BUILD | Success | 1:20:20 ago |
| 4     | SR-COMMIT-CI-BUILD | Success | 1:20:20 ago |
| 5     | SR-COMMIT-CI-BUILD | Success | 1:20:20 ago |
| 6     | SR-COMMIT-CI-BUILD | Success | 1:20:20 ago |
| 7     | SR-COMMIT-CI-BUILD | Success | 1:20:20 ago |
| 8     | SR-COMMIT-CI-BUILD | Success | 1:20:20 ago |
| 9     | SR-COMMIT-CI-BUILD | Success | 1:20:20 ago |
| 10    | SR-COMMIT-CI-BUILD | Success | 1:20:20 ago |
| 11    | SR-COMMIT-CI-BUILD | Success | 1:20:20 ago |
| 12    | SR-COMMIT-CI-BUILD | Success | 1:20:20 ago |
| 13    | SR-COMMIT-CI-BUILD | Success | 1:20:20 ago |
| 14    | SR-COMMIT-CI-BUILD | Success | 1:20:20 ago |
| 15    | SR-COMMIT-CI-BUILD | Success | 1:20:20 ago |
| 16    | SR-COMMIT-CI-BUILD | Success | 1:20:20 ago |
| 17    | SR-COMMIT-CI-BUILD | Success | 1:20:20 ago |
| 18    | SR-COMMIT-CI-BUILD | Success | 1:20:20 ago |
| 19    | SR-COMMIT-CI-BUILD | Success | 1:20:20 ago |
| 20    | SR-COMMIT-CI-BUILD | Success | 1:20:20 ago |

## Quick CI

Build: #17

Last Run:  
2 hs

Run By:  
SYSTEM

Duration:  
2m 0 s

Tests: (364)

History:

362

0

2

Passed

Failed

Warn



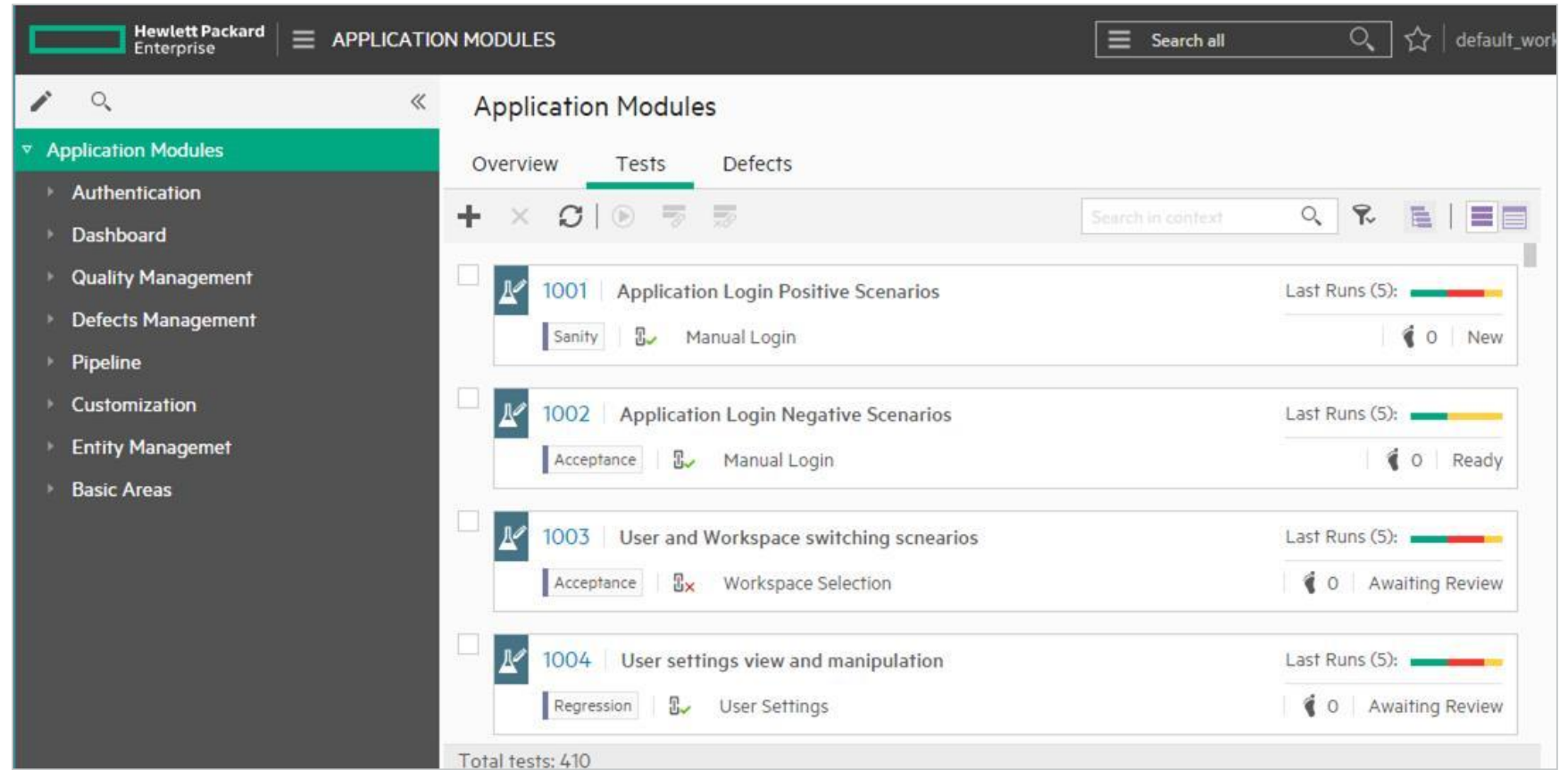
Join the beta

# Test

Manage quality throughout the lifecycle

## Manual test

- Test creation in text editor
- Tagging for efficient filtering
- Test metrics dashboard
- Optimized layouts



Environment  
configuration

Jenkins as test execution  
engine

GIT for test repository  
and versioning

Business Rules State  
Engine

# Test

## Develop tests in a structured language (gherkin)

The screenshot displays the Hewlett Packard Enterprise Quality Management interface. The top navigation bar includes the HP logo, 'APPLICATION MODULES', a search bar, and user/workspace information. The breadcrumb trail shows 'Application Modules / Quality Management'. The main header identifies the test as '1014 | Author tests for new content' and indicates the 'Current phase: New' with a 'Move to In Design' option. Below the header are tabs for 'Details', 'Relationships', 'Steps', 'Runs', and 'Attachments', with 'Steps' selected. A toolbar offers actions like 'Add Validation Step', 'Add Setup Step', 'Add Call Step', 'Save Version', and 'Load Version'. The main content area contains a list of test steps in Gherkin format:

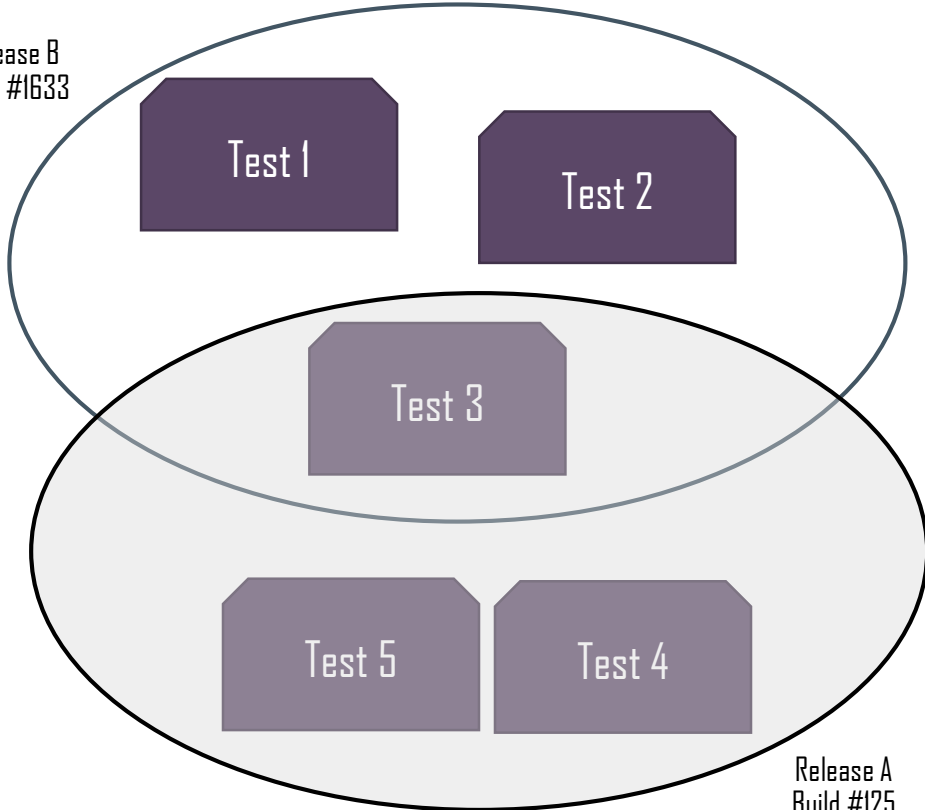
- 1 - Use the new text editor for faster and more efficient test authoring.
- 2 - Switch between the text editor and the visual editor using the toggle button in the top-right corner.
- 3 - Start setup steps with a hyphen, then describe what the tester should do.
- 4 A step can contain multiple lines.
- 5 making a change
- 6 making another change
- 7 and why not make one more change
- 8
- 9 - ?Start validation steps with a hyphen followed by a space and a question mark. When running the test, the tester will be able to select a status.



# Track

View quality aggregation in context of your entire application

Release B  
Build #1633



Release A  
Build #125

**Application Modules** Overview

Total Tests: 101

Manual vs. automated tests: Total Tests: 101

Tests by phase (Number of Tests):

| Phase           | Number of Tests |
|-----------------|-----------------|
| New             | 8               |
| In Design       | 18              |
| Awaiting Review | 16              |
| Ready           | 16              |
| Automated       | 20              |
| Obsolete        | 21              |

Last Runs by testing tool, gr... Total Test runs: 505

Last Run status by test type Total Test runs: 505

Legend: Passed (Green), Failed (Red), Requires Attention (Orange)

Right sidebar: RELEASE (390.5, 390.4, 390.3, 390.2), ENVIRONMENT, TAGS

Get In Touch

**Network Connection** Tests

Select All

| ID   | Description  | Last Runs (5) | Status   |
|------|--|---------------|----------|
| 1022 | Check that app does not crash when network connection is interrupted | 0             | Ready    |
| 1028 | Check that app works when switching cellular networks                | 0             | New      |
| 1032 | Check that app works when signal is low                              | 0             | Obsolete |

Right sidebar: RELEASE (714.5, 714.4, default\_release, 714.3), ENVIRONMENT, TAGS, PIPELINE, TEST SUBTYPE (Automated Test, Manual Test, Other Test), TEST TYPE (Acceptance, End to End, Regression, Sanity), TEST PHASE (New, In Design, Awaiting Review, Ready, Automated, Obsolete), RUN STATUS (Passed, Failed, Blocked, Skipped, Not Completed)



# Demonstration

# Welcome to the future

Next Generation ALM is now in Beta mode. In order to get your own tenant, e-mail us: [lm\\_feedback@hpe.com](mailto:lm_feedback@hpe.com)

**Public beta is live on SaaS, March 24th  
April 4<sup>th</sup> On-Premise Download**

Public beta is live on SaaS, March 24th  
<https://saas.hpe.com/signup/try/alm-beta>

Welcome

Name:

Password:

Login





# Hewlett Packard Enterprise

Q+A



**Hewlett Packard**  
Enterprise

Thank you



Hewlett Packard  
Enterprise

# Discover 2016

Las Vegas June 7-9



Discover 2016 is Hewlett Packard Enterprise's must-attend global customer and partner event. Why attend?

- Explore how Hewlett Packard Enterprise is delivering IT solutions for the New Style of Business to help you go further, faster
- Network with 10,000+ attendees, including C-level executives, IT directors, engineers and HPE experts
- Find content for you, choosing from our broad array of technical and business sessions
- Explore the latest innovations from HPE in the Transformation Zone
- Find thousands of experts on hand to answer your questions and address your challenges
- Exchange ideas, information and best practices with other IT professionals and industry leaders

Register Now and receive your member discount with this

Vivit registration link:

<https://www.hpe.com/events/discoverSWVivit>



# Thank you

- Complete the short survey and opt-in for more information from Hewlett Packard Enterprise.

[www.hpe.com](http://www.hpe.com)

[www.vivit-worldwide.org](http://www.vivit-worldwide.org)

